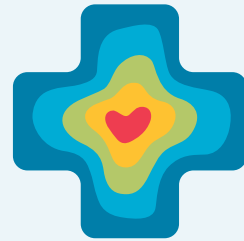




***Make a real difference
in people's lives and see
your career go places
with the support from a
team that cares for you
like family.***

Josephine Wallis
Chief Executive
Geneva Healthcare



Geneva
Elevator

CONTACT US



Freephone: 0508 353 828
Bay of Plenty: 027 209 8512
www.genevaelevator.co.nz
enquiries@genevaelevator.co.nz

Introduction to Caregiving

TRAINING FOR WORK

13 week pre-employment training



Geneva
Elevator

Get the skills you need to get back into the workforce and make a difference in people's lives

Are you looking to get back into the workforce?

Kick-start your career with the Training For Work: Introduction To Caregiving course and get the skills you need to get into entry level roles in healthcare.

- Monday to Friday for 13 weeks
- Classroom and on the job training
- Enrolment into CareerForce Level 2 Certificate in Health & Wellbeing

Call Geneva Elevator today and start your best career!

Develop your career

What will the job be like?

The healthcare industry provides many rewarding positions in Health, Home & Community Support, Aged Care, and Disability Services.

You will be able to:

- Confidently provide care & support to people with a disability, illness, injury, and the elderly.
- Communicate and assist in your client's health and wellbeing
- Recognise and report risks and changes
- Take advantage of opportunities for career advancement

Shift work:

Enjoy the variety and flexibility of shift work that allows you to spend time with the family or other commitments.

Main shift schedules (shifts may vary):

- Morning: 7am to 3pm
- Afternoon: 3pm to 11pm
- Night: 11pm to 7am
- Weekdays or weekends

Training For Work

What will I learn?

- First Aid training
- Manual handling of clients
- Infection control
- Personal Cares
- Person's Rights
- Maintaining a safe environment
- Medication handling
- Palliative Care
- Quality of life
- Impact of culture
- Intellectual Disability Care
- Health & Safety
- CV, cover letter & interview preparation
- Driver Licences

What skills do I need?

- Reliable
- Respectful
- Empathetic
- Reading and writing skills
- Able to speak and understand English
- Interest in caring for others

How can I apply?

Please talk to **Work & Income** about our *Training For Work* course, or contact **Geneva Elevator** on:

Freephone: 0508 353 828

Bay of Plenty: 027 209 8512

www.genevaelevator.co.nz

enquiries@genevaelevator.co.nz