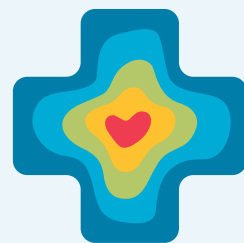


# Assisting Young Persons With Diverse Abilities To Achieve Their Personal Best



Geneva  
Elevator

You can access Geneva Elevator's services by enquiring directly or referral from your GP, Teachers, Transition Providers, Rehabilitation Providers, ACC, Ministry of Social Development and Ministry of Health.

We also welcome private users to our facility.

## CONTACT US



(09) 531 5600 | 0508 353 828

[www.genevaelevator.co.nz](http://www.genevaelevator.co.nz)

[enquiries@genevaelevator.co.nz](mailto:enquiries@genevaelevator.co.nz)

Geneva Elevator  
13 Coyle Street, Sandringham  
PO Box 106339, Auckland 1143

# THRIVE @ Geneva Elevator

A Programme Assisting  
Young People With Diverse Abilities  
To Achieve Their Personal Best



## Live Your Best Life

(09) 531 5600 / 0508 353 828  
[enquiries@genevaelevator.co.nz](mailto:enquiries@genevaelevator.co.nz)  
[www.genevaelevator.co.nz](http://www.genevaelevator.co.nz)

# Everyone should have the chance to live fully.

**Josephine Wallis**  
Chief Executive  
Geneva Healthcare



## **THRIVE @ Geneva Elevator**

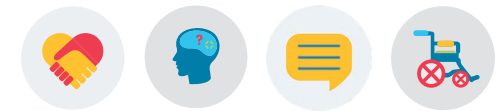
Geneva Elevator offers a service to young school leavers moving from the school environment into adult programmes.

We work together to develop a personalised plan based on each young person's goals, needs, capabilities and aspirations.

THRIVE is funded by the Ministry of Social Development (MSD). The funding is to support each person to develop a life plan around community participation.

### **The THRIVE Programme:**

- Cooking
- Community Outings
- Exploring Auckland
- Utilising Public Transport
- Dance And Music
- Arts And Crafts
- Access to Geneva Elevator's Gym
- Personal Trainer
- Pet Therapy
- SPEC Training For Work Programme



### **When And Where THRIVE Is Based:**

9am - 2:30pm  
Mondays, Tuesdays and Fridays  
13 Coyle Street, Sandringham,  
Auckland

Contact Us:  
(09) 531 5600 | 0508 353 828  
[www.genevaelevator.co.nz](http://www.genevaelevator.co.nz)  
[enquiries@genevaelevator.co.nz](mailto:enquiries@genevaelevator.co.nz)

### **Additional Services With The Geneva Group:**

- Very High Needs Programme
- Supported Employment
- Transition Services
- Community Living
- Home and Community Support
- Community Nursing

***“My mission in life is not merely to survive, but to thrive; and to do so with some passion and humour” - Maya Angelou***

